

/ URBANISM ARCHITECTURE,
RENOVATION & INTERIOR DESIGN

/ GRAPHIC DESIGN & WEBSITE DESIGN

IMKE

/ DELFT UNIVERSITY OF
TECHNOLOGY &
UNIVERSIDADE DE COIMBRA

/ VLAA ARCHITECTS

/ ATELIER RIJKSBOUWMEESTER

/ CLAUDIO TAPIA ARQUITECTOS

PORTFOLIO



Museum of Knowledge \ Chandigarh, India
competition

- 04\ **CASA BM SANTIAGO**
- 06\ **YAC BOLOGNA**
- 06\ **EUSEBIUS ARNHEM**
- 10\ **V. MEURSSTRAAT UTRECHT**
- 12\ **MOK CHANDIGARH**

- 18\ **PROJECTS ARBM**

- 24\ **SPIRAL OF LIGHT AMSTERDAM**
- 26\ **MHI7 MEMORIAL AMSTERDAM**
- 30\ **VERTICAL SLUM SÃO PAULO**
- 36\ **IMPACT HUB AMSTERDAM**

- 38\ **PARTICIPATION DESIGN METHOD RESEARCH**

- 40\ **TRASHY HOUSING ACCRA**
- 44\ **MEDIATHEQUE CASABLANCA**
- 46\ **BOIJMANS VAN BEUNINGEN ROTTERDAM**
- 48\ **CARPET DESIGN UTRECHT**

- 50\ **PUBLICATIONS**

- 52\ **RECOMMENDATION LETTERS**

CONTENT



V. Meursstraat / Utrecht, The Netherlands
completed in 2015



Vertical Slum / São Paulo, Brazil
competition - finalist



Trashy Housing / Accra, Ghana
graduation project

PROJECT

Casa BM

LOCATION

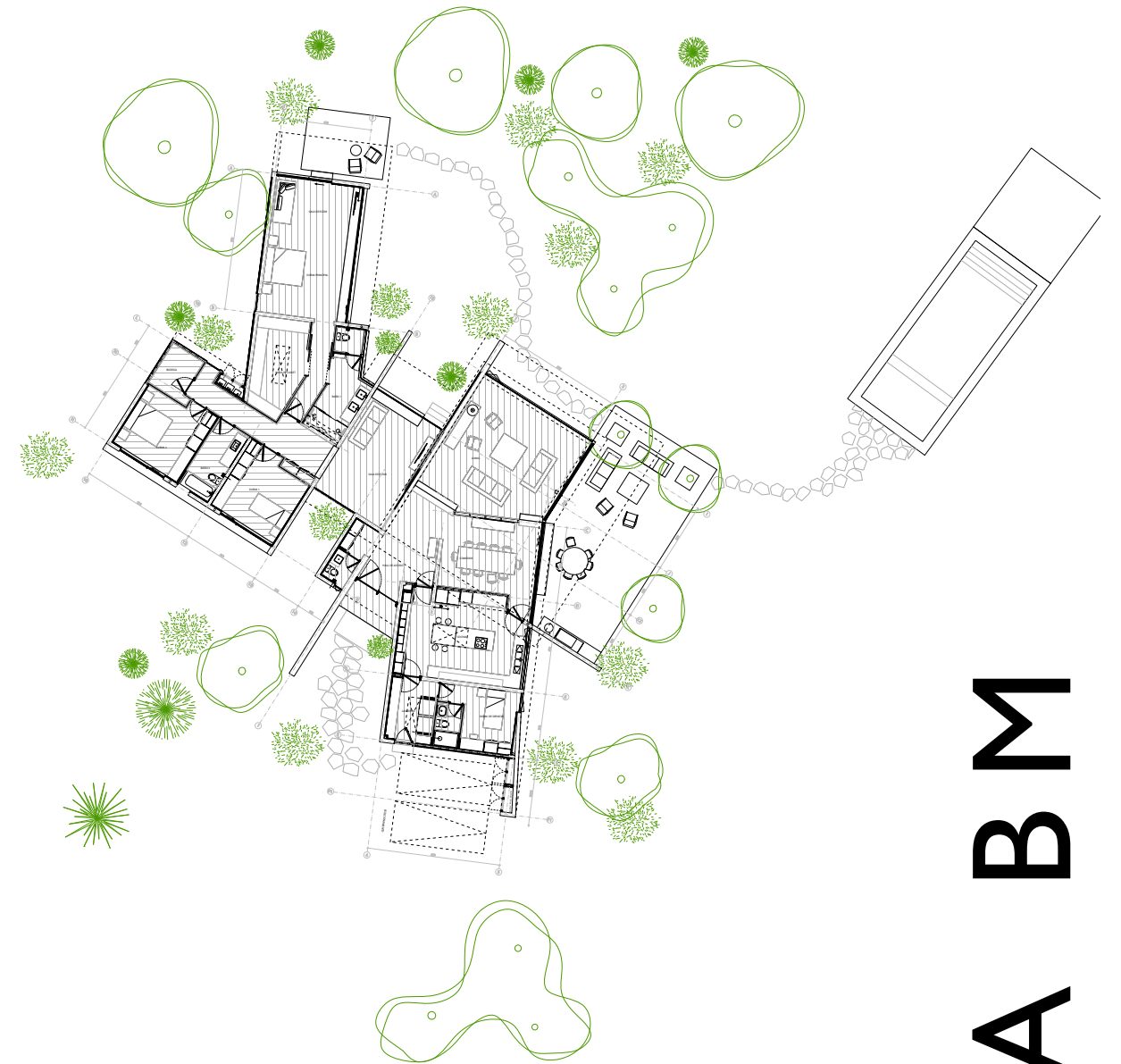
Santiago, Chile

PERIOD

2016 - 2017

TEAM

Claudio Tapio
Arquitectos



CASA BM

PROJECT
Competition YAC

LOCATION
Bologna, Italy

PERIOD
August 2016

TEAM
VLAA architects

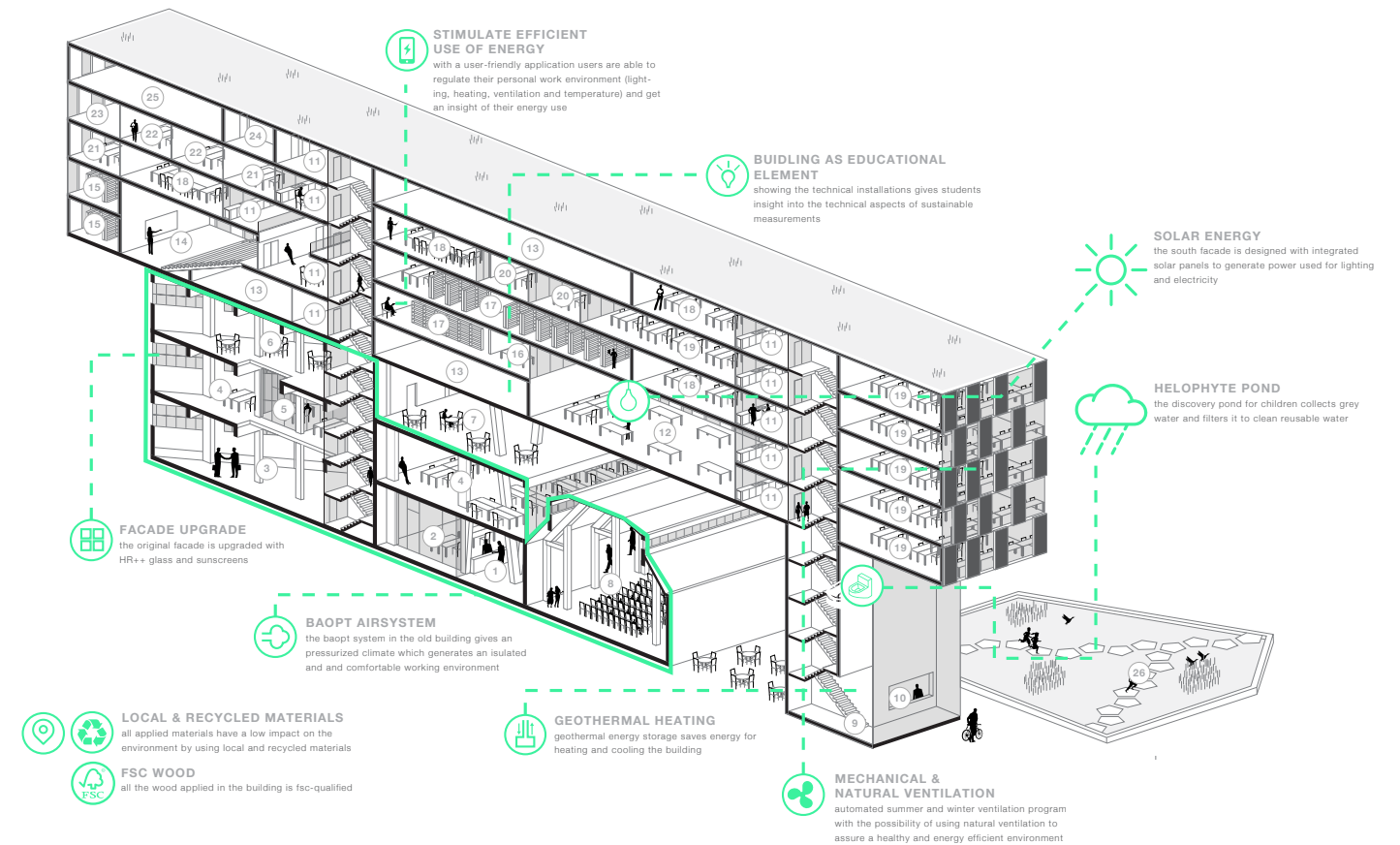


/ ENERGY POSITIVE SHOWCASE FOR GREEN ACADEMY

The former paper factory of Marzabotto houses the green institute & academy by DISMECO. The institute contains an academy with high-level training facilities, a green business incubator and an interactive museum, all of them educating a broad public in sustainable science.



YAC



BUILDING as a LEARNING EXAMPLE

As an institute for green and sustainable science, the building itself should embrace the mission. Therefore we strive to realize an energy-efficient building with a minimal impact on the environment. A sustainable building also constitutes a building with a healthy and pleasant environment for those working in it, and those visiting the building. As an educational concept the building technologies used to achieve those goals will all be visible and locally explained to the users. In this way the impact of new technologies is clearly shown and will be an inspiration to the students and other visitors.

RENOVATION vs. BUILDING NEW

Sustainable design in renovation or in new buildings asks for a completely different approach. To be able to illustrate the wide range of possibilities within sustainable design we created a composition of two different volumes that act as

a playground for sustainable design. The majestic paper factory showcases the measures one could take in reuse, bringing an beautiful old building up to standards. The newly added volume of the academy gives us the possibility to go wild in showing the technologies that one could use starting from scratch. The goal is to make this volume completely energy passive.

ENERGY POSITIVE

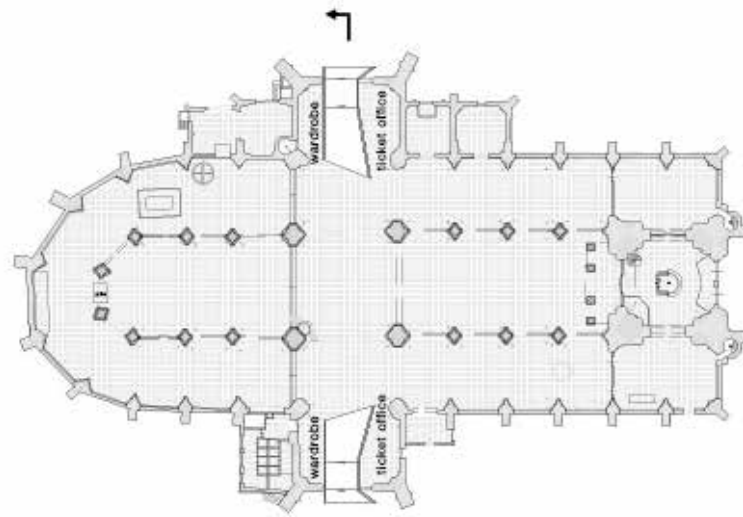
Creating a passive building has different consequences for its design. The energy use of the building is reduced with different interventions, f.e. by a facade with a thermal resistance of 10 m²K/W or an enclosed south facade to reduce radiation heat entering the building. Users are also stimulated to reduce their energy consumption by a user-friendly application created to save energy. Beside reducing energy-loss, the building also generates energy by the solar panels intergrated in the south facade.

PROJECT
Entrance Eusebius

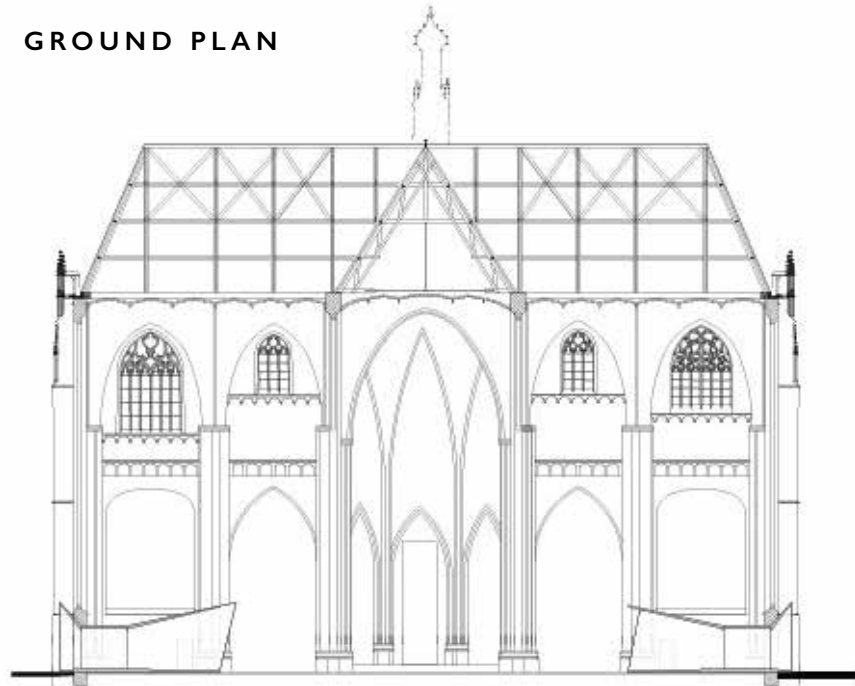
LOCATION
Arnhem,
The Netherlands

PERIOD
January 2016

TEAM
VLAA architects



GROUND PLAN



SECTION

/ COMPLETE URBAN ROUTE
BY ARCHITECTURE



EUSEBIUS

For the redevelopment of the Eusebius church in Arnhem VLAAR designed two new entrances for the northern and southern transepts. The redevelopments aim to attract a larger crowd by way of exhibitions, concerts and even modern lookouts on top of the church. The new entrances play an essential role in these plans.

We have given the entrances a friendly and extraverted character through design and material, both stylish and inviting. In this way the entrances attract young and new audiences but also fit in with the current users of the church.

By placing the entrances in the middle of the transepts two new areas are created for the reception offices and the wardrobe. Within the walls of the entrances there is room for the exhibition of small art, books and other objects.

The newest techniques have been used to recycle plastic bottles and other waste material into 3D-printing fuel. By use of specific developing software every facade and ceiling element can be shaped in a unique way. This is how we have the freedom to bring back the characteristic pattern of the churches interior ceilings; an old style with a new look.

/ RECYCLE PLASTIC
BY 3D-PRINTING TECHNIQUE

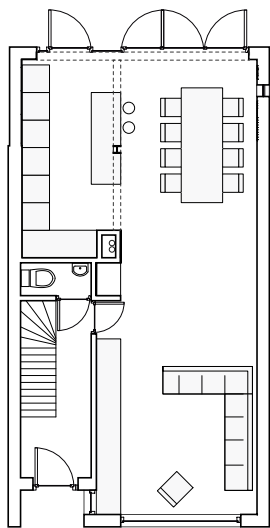
\ DESIGN BY LIGHT

PROJECT
Van Meusstraat

LOCATION
Utrecht,
The Netherlands

PERIOD
2015

TEAM
VLAA architects



/ Key in the design for the expansion of this late forties house is the large amount of daylight flooding in through the new façade. In its original state the back of the house was compartmented and had small windows. Breaking away the interior walls and adding an expansion into the garden added a lot of space to the kitchen en living room area. To bring the daylight even further into the room the roof of the expansion was raised. The newly placed loadbearing column and beam are accented with a dark grey colour to make them a strong element in the interior composition. The main part of the kitchen drops back into the wall, which conceals it from sight. The main countertop is placed alongside the wall, leaving place for a nice bar element build against the dark column.

The hallway was renovated to make place for a larger bathroom and a new main door to the living room. This nicely ornamented door was reused from one of the old cupboards and maintains the beautiful contemporary style of the house.



V. MEURSSTRAAT

PROJECT
Museum of Knowledge

LOCATION
Chandigarh, India

PERIOD
Augustus 2015

TEAM
VLAA architects

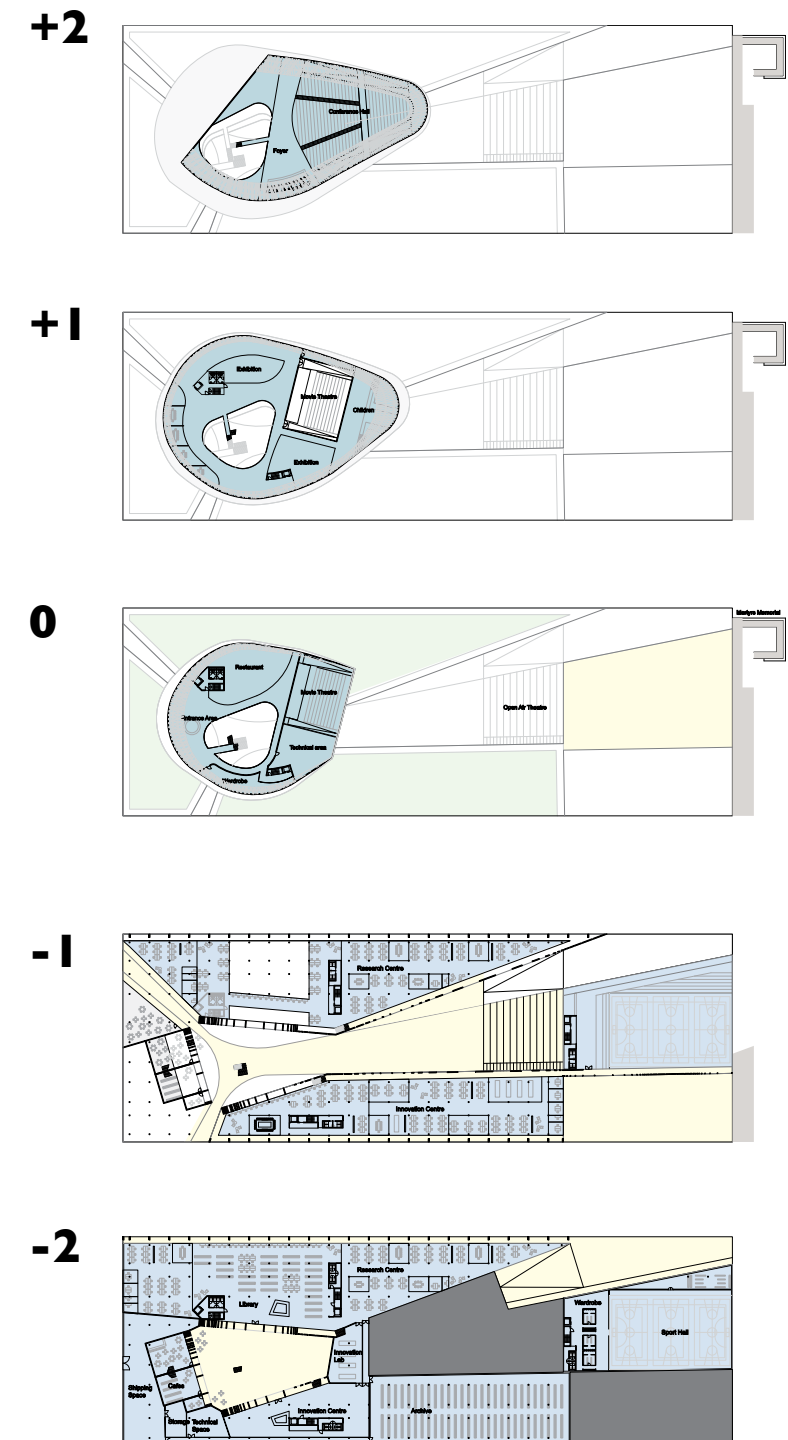
MOK

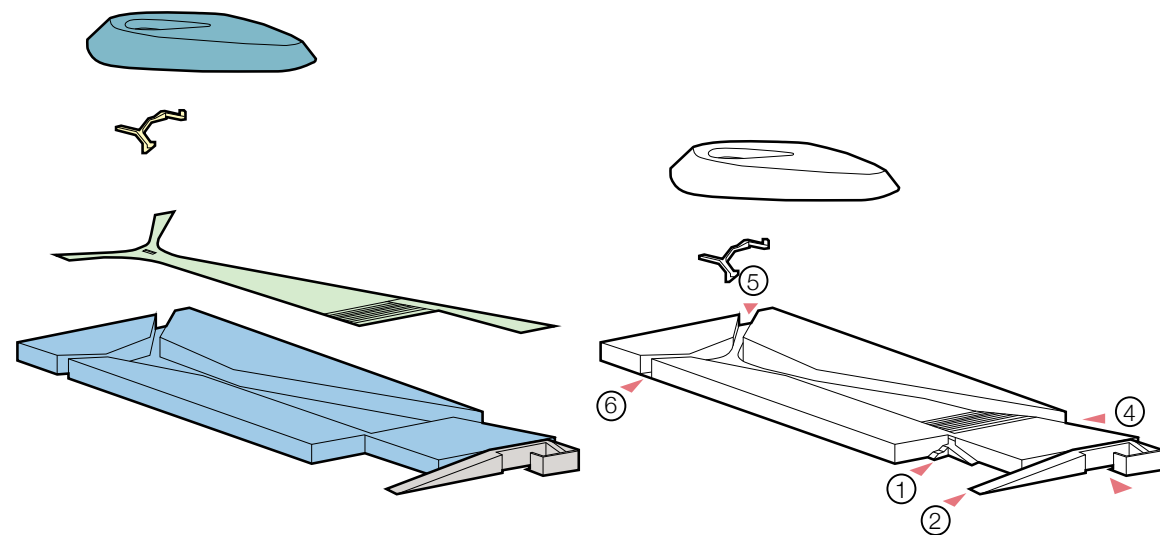


\ EMOTIONAL POWER BY DESIGN



\ In the year 1953 the city of Chandigarh was founded. This city – designed by architect Le Corbusier – was built as the new capitol for the Indian part of Punjab; Haryana. Le Corbusier designed the complete layout of the city and built a concrete capitol with all the governmental facilities the city needed. The museum of knowledge that was planned was never built and left an empty plot in the middle of the capitol. The Chandigarh Unbuilt competition challenged designers to come up with a relevant design for the Museum of Knowledge based upon Le Corbusier's principles, completing the layout of the city.





CONCEPT

- Martyrs Memorial
- plinth building
- roof programme
- connecting staircases plint - utopia
- utopia

ENTRANCES

- ① ③ entrance via Martyrs Memorial
- ④ entrance via access road
- ⑤ entrance north side
- ⑥ entrance east side

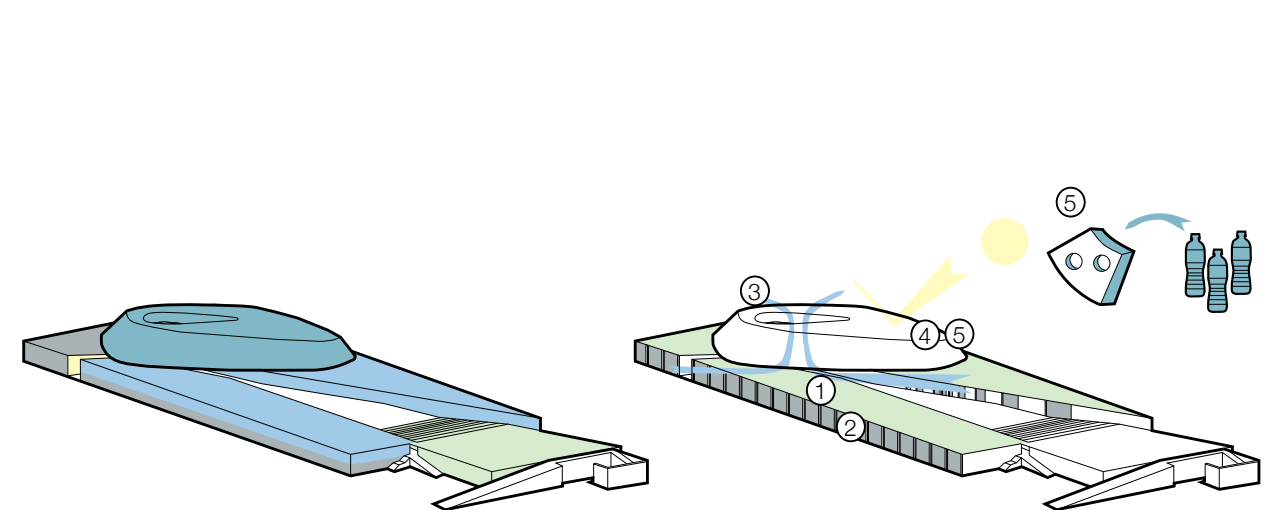
The proposal for a new Museum of Knowledge in the center of the Chandigarh Capitol focuses on creating knowledge and sharing it with the world. The design separates these functions into two main forms.

The plinth symbolizes the foundation of knowledge. In here students and scientists find all the supporting facilities they need to do their research.

Carried by this foundation is the Utopia: a futuristic exhibition centre. For this building the newest technologies have been used, so that not only the exhibition but also the building itself shows the accomplishments of science.

From different directions streams of people come together under the Utopia, symbolizing that knowledge can bring people together. Upon arrival under the main building the visitors suddenly enter an overwhelming atrium. Here they are welcomed to experience a journey of discovery into the world of science.

/ SUSTAINABLE DESIGN



ORGANISATION

- gaining knowledge
- sharing knowledge
- entertainment
- retail
- services

SUSTAINABILITY

- ① green roof for isolation and CO2-production
- ② cantilever to ensure shading
- ③ natural ventilation by atrium
- ④ reflection facade
- ⑤ upcycled plastic into facade



PROJECTS

several

LOCATION

The Netherlands

PERIOD

2014 - 2016

TEAM

headed by
Koen van Velsen &
Floris Alkemade

ATELIER
RIJKSBOUWMEESTER

During my time at the Chief Government of Architecture (Atelier Rijksbouwmeester) - Floris Alkemade - I worked in a small, but diverse team of architects, urbanists, artists. Together we advised the Central Government Real Estate Agency and relevant Ministries of the Netherlands on the quality of spatial planning.

In this period I worked on several renovation projects, tenders and rejecting projects. These projects varied in scale, significance and consideration. This asked for a different approach in each project which is reflected in the broad activities of my work; from visualisation to feasibility studies of drafting quality standers for tenders. In all these projects I worked with different stakeholders such as clients, municipalities, designers of private investors.

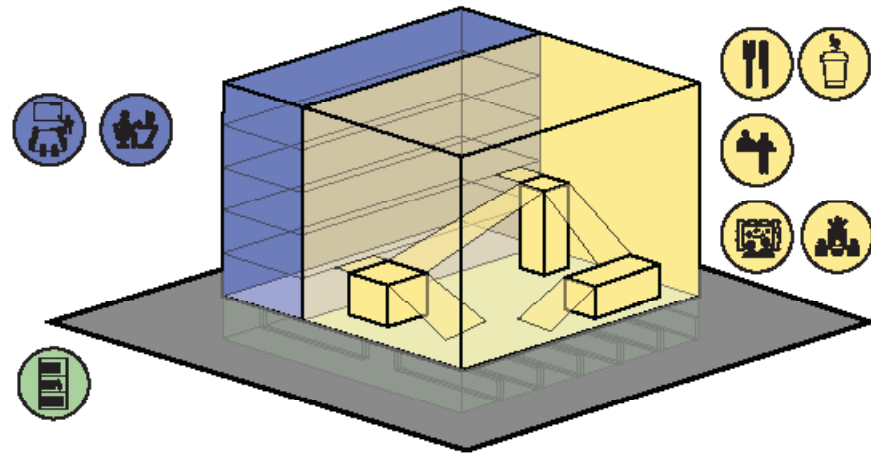
The projects we work on are often politically sensitive and therefore our work is mainly confidential. The next pages show a selection of my work to give an overall impression of my work at the Chief Government of Architecture.



Binnenhof, several architects, 1230 - 1992, The Hague



\ WORKSHOPS WITH STAKEHOLDERS



\ FEASIBILITY STUDIES & PROGRAM OF REQUIREMENTS

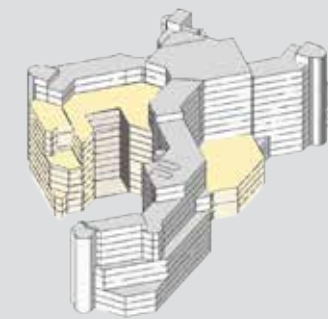


Royal Library of The Netherlands, OD205, 1982, The Hague

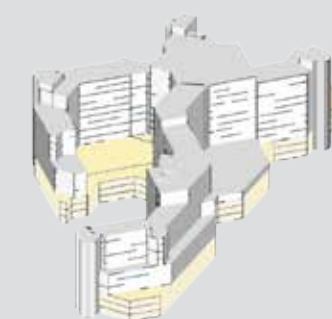
/ RESEARCH BY DESIGN



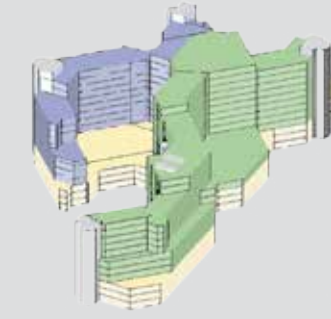
Ministry of Foreign Affairs, Dick Apon, 1979, The Hague



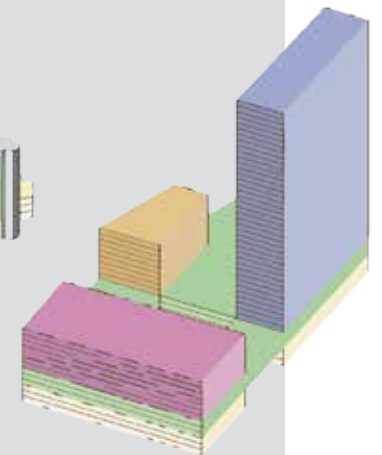
MODEL 1



MODEL 2



MODEL 3



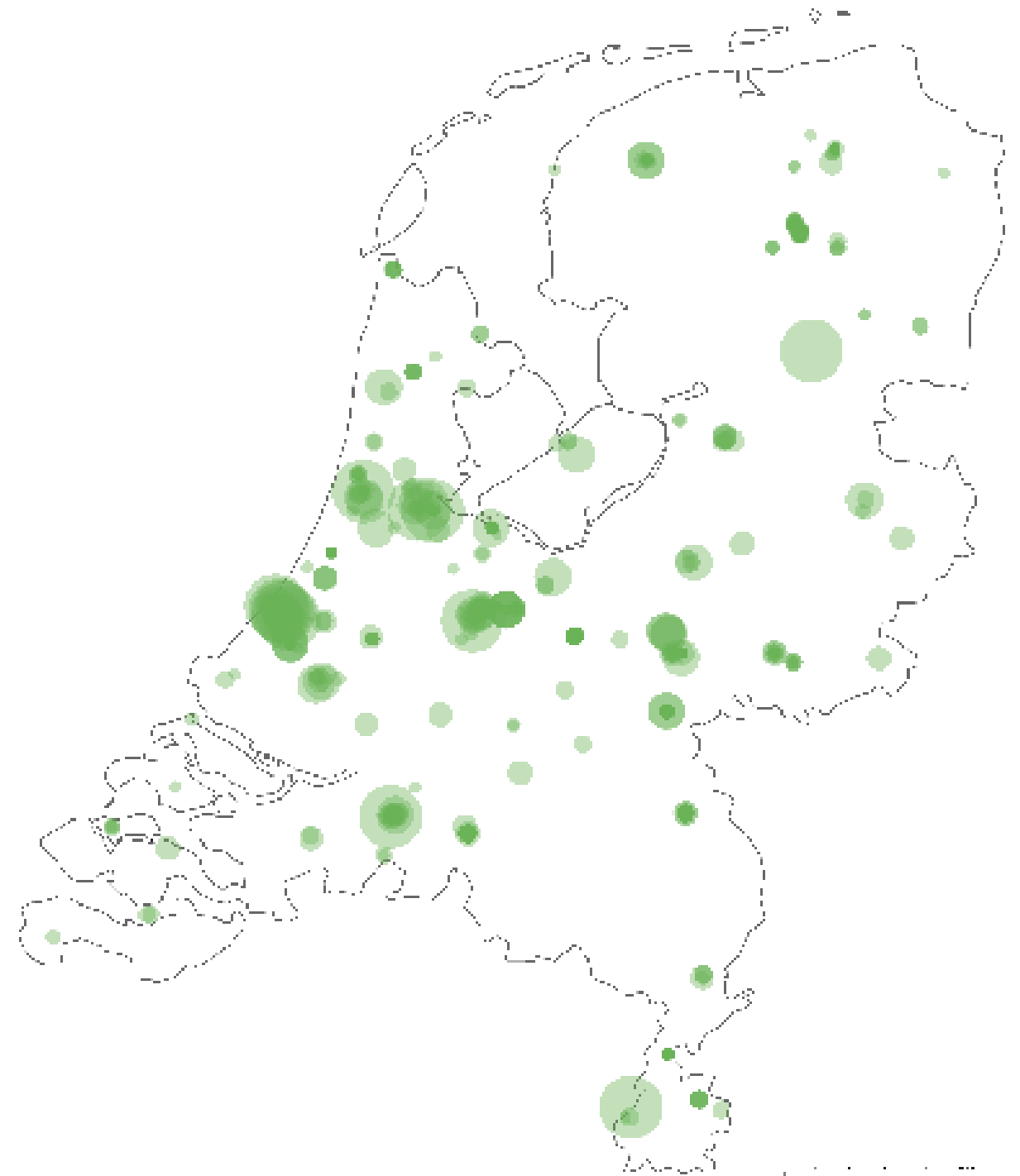
MODEL 4

\ ARTIST IMPRESSION

/ MAPPING STATE PROPERTY



Indoor Farming, Hembrugterrein Zaandam



Atlas of Dutch Governmental Real Estate, The Netherlands

PROJECT
Amsterdam Light
Event

LOCATION
Amsterdam,
The Netherlands

PERIOD
April 2015

TEAM
VLAA architects
in collaboration with
Jeroen Smit

SPIRAL OF LIGHT

\ EXPRESSING FRIENDSHIP
BY LIGHT

PROJECT
MH17 Memorial

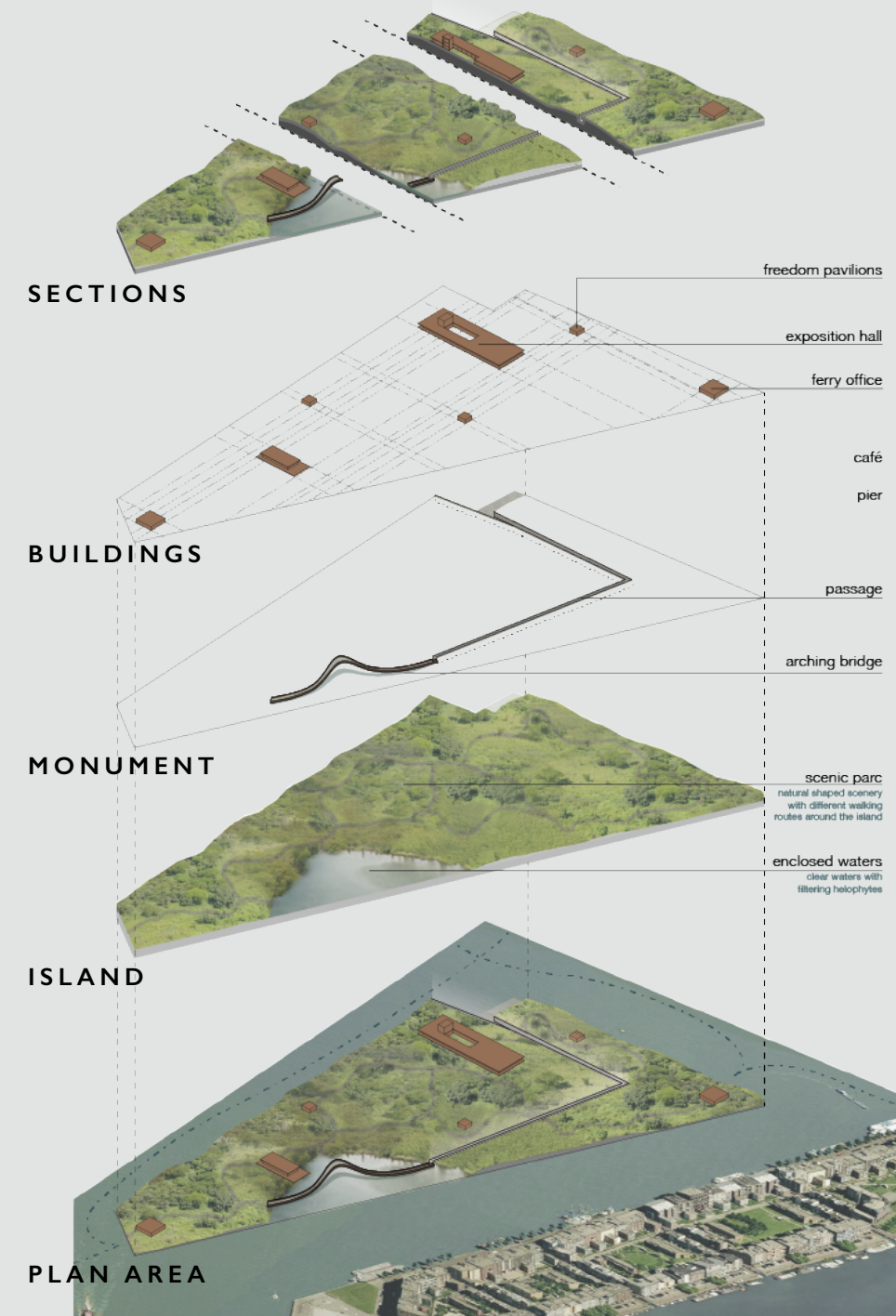
LOCATION
Amsterdam,
The Netherlands

PERIOD
April 2015

TEAM
VLAA Architects



MH17 MEMORIAL



/ CELEBRATING LIFE,
MOURNING THE LOST,
LOOKING TO THE FUTURE



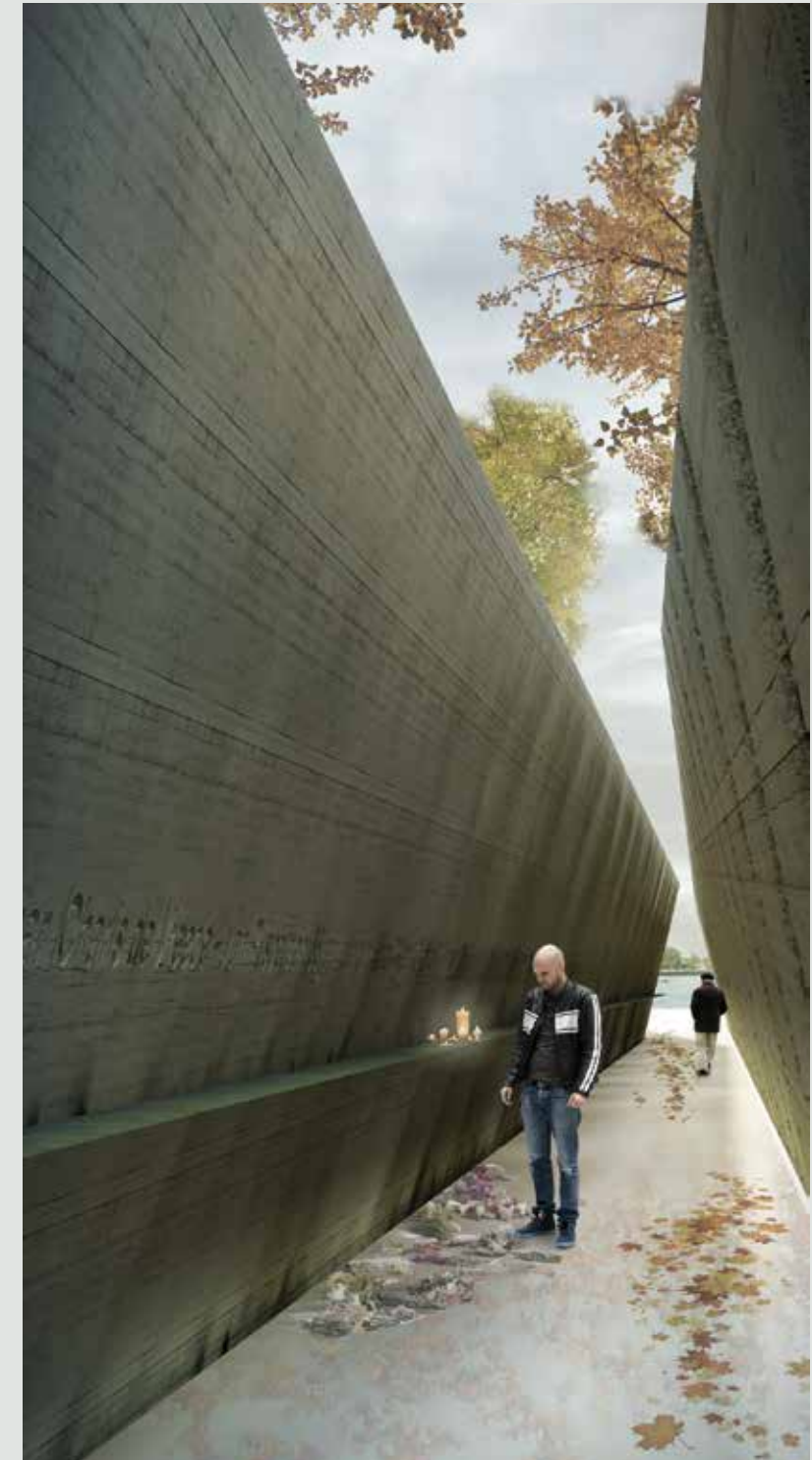
\ In one short moment 298 people lost their lives. Bereaveds are left with the memory of their lives and a gaping hole in our hearts. In mourning it is up to us to celebrate their lives, mourn the lost and look to the future.

Within the MH17 memorial park lays the memorial route. Along this route the three themes - celebrating life, mourning the lost, looking to the future - are expressed in three different elements.

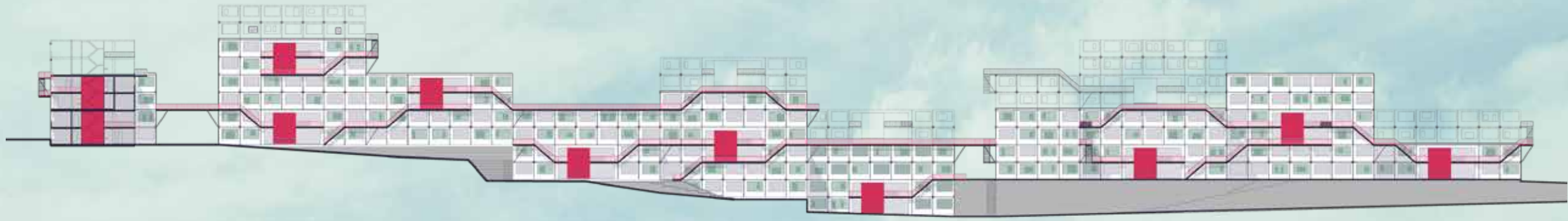
The wide and up-going volume of the *arching bridge* reflects life, going forward from one place to another. It reflects the anticipation the victims probably felt during the beginning of their long-expected travels. To emphasize the meaning of the bridge it is constructed from a natural, living material: wood.

The sudden stop of the bridge at the start of the *passage* confronts us with the sudden crash of MH17. The harsh straight shape cuts as an open wound through the park. Walking below park level, the visitors can read the names and ages of the victims in the cast concrete walls. The same wooden slats that were used for the bridge are used for the casting of these walls, their imprint reflecting the imprint that life left behind.

At the end of the passage *the pier* reaches out over the river the IJ. Looking out across the water, boats gliding by, the visitor can have a peaceful moment, trying to give loss a place and look to the future. Finally a stairway will lead the visitor back up, ascending into the park.



VERTICAL
SLUM



PROJECT

Vertical Slum

LOCATION

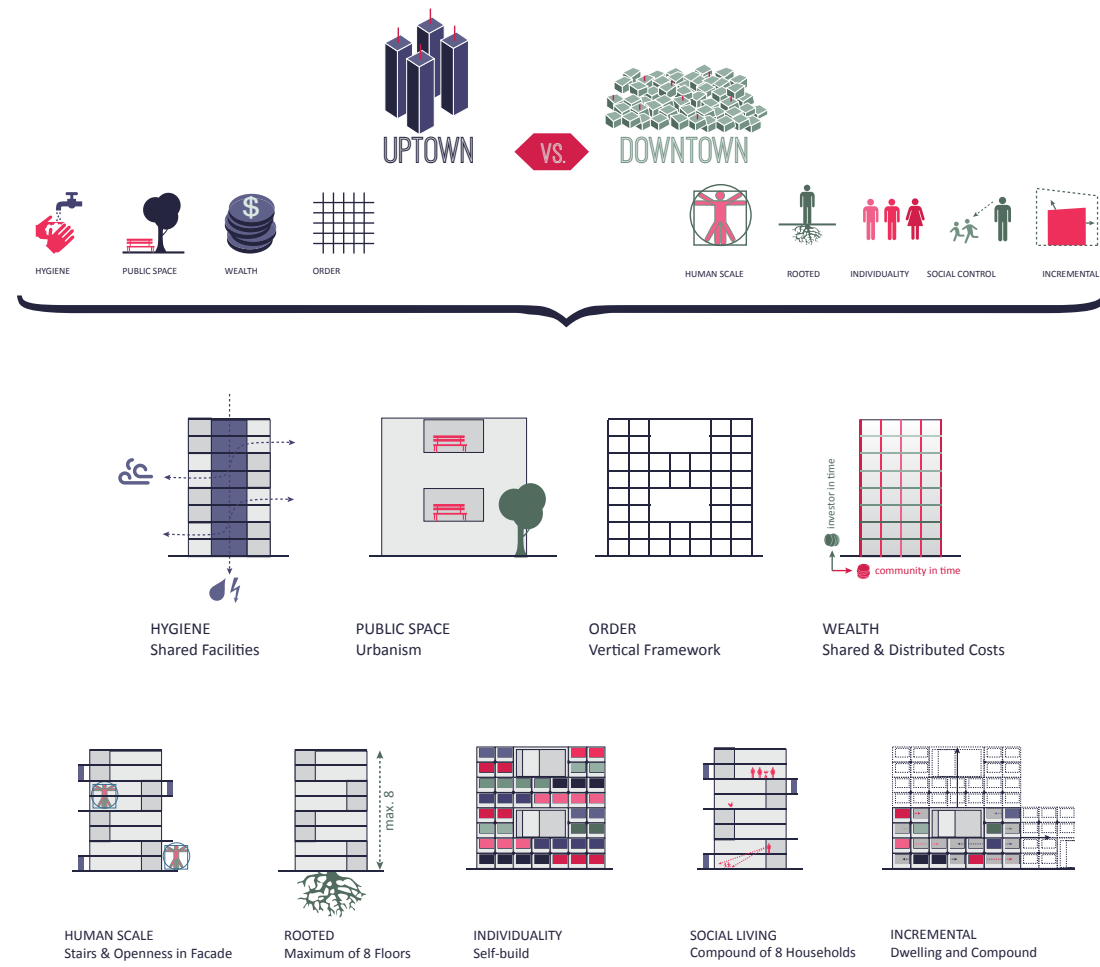
São Paulo, Brasil

PERIOD

December 2014

TEAM

VLAA architects



**/ THE VERTICAL SLUM
COMBINES ORDER WITH
INFORMALITY**



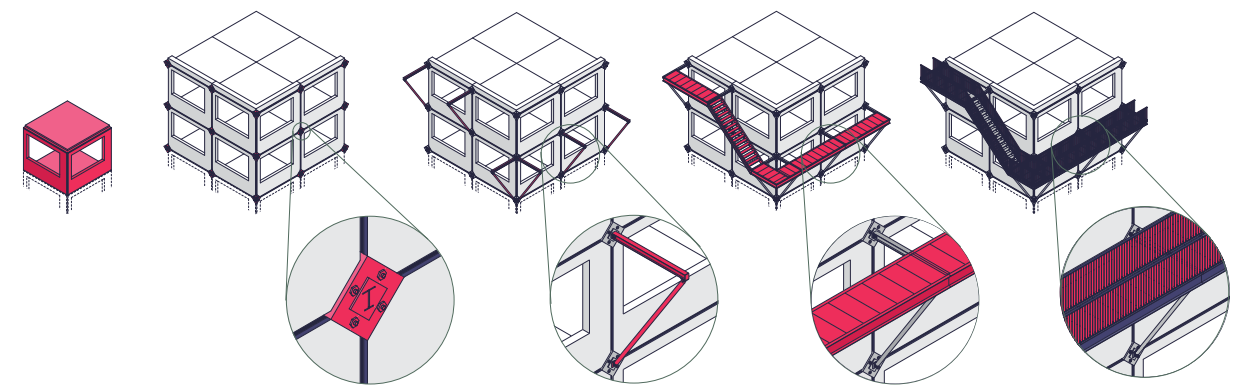
URBAN PLAN

\ Skyscraper vs. Slum; The two most urban structures with the highest density in people, are probably the most contrasting structures we can imagine. While the upper class neighbourhoods in develop countries consist of luxurious high-rise, the poorest areas of the world are self-constructed habitats known as slums, villas miseria, favelas, bidonvilles and shantytowns, mainly consisting of low-rise. This proposal translates the qualities of skyscrapers into practical solutions for the *vertical slum*.

The Vertical Slum proposal combines the best of both worlds. On the one hand it takes the infrastructure, planning and height (max. 6 stories) of the modern skyscrapers. On the other hand the informality, the human scale, the relation with the street and the social communities of the informal slums. In this structure we will ensure a natural

ability to grow and reach an incremental urban tissue, leaving space for public functions to arise.

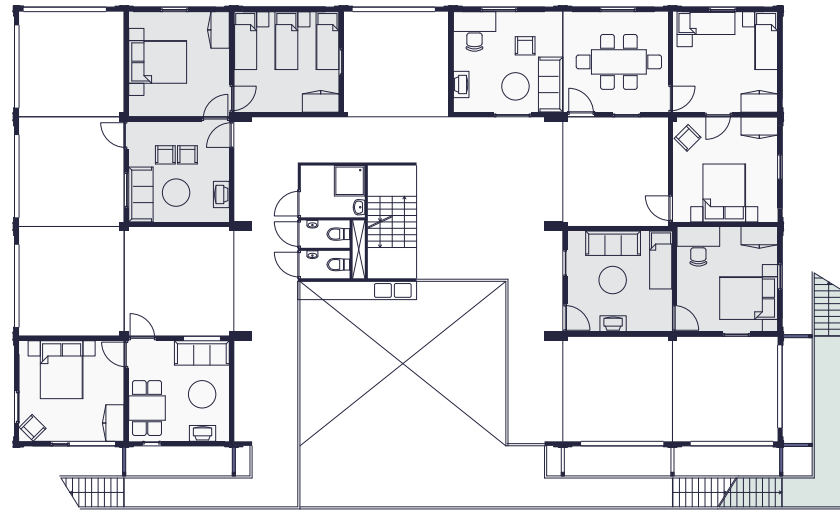
The building layout for this proposal is based on three different scale levels, each incrementally shaped by the residents to a high degree. These scale levels make it possible for the building to connect with the citizens' needs as well as to adjust towards the structure of the existing neighbourhoods. From individual spaces to urban structure, these scale levels consist of: the modular room/the dwelling, the compound and the building in its urban context.



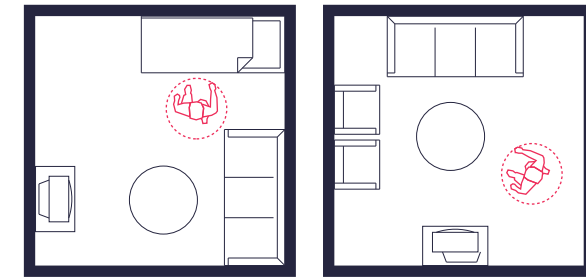
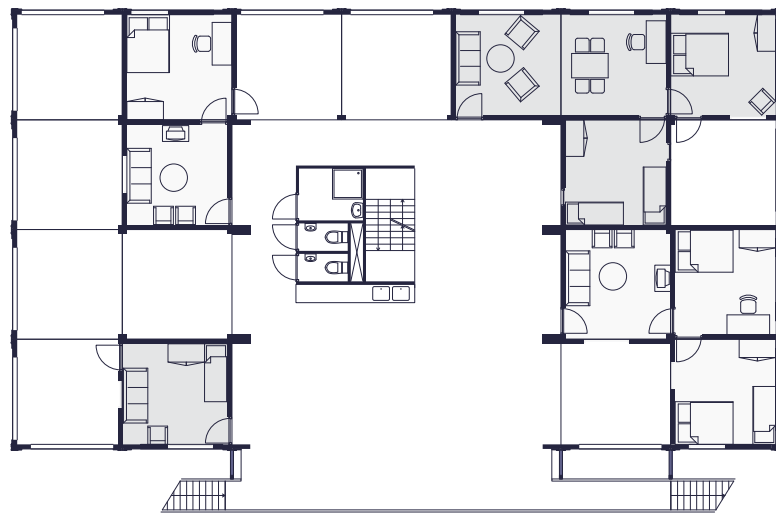
TECHNICAL PRINCIPLES OF
THE URBAN PLAN

\ RESIDENTS CREATE THEIR HOMES AND CITIES

+1

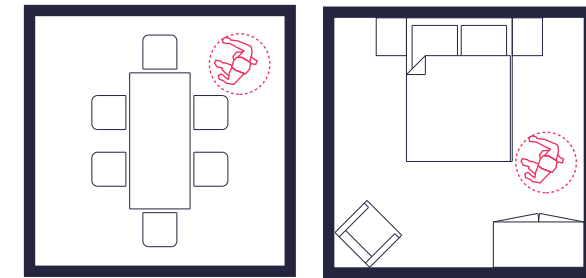


0



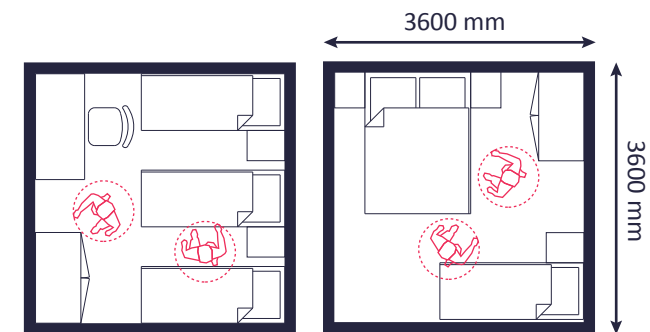
One-room Apartment

Living Room



Dinner Room

Parental Bedroom



Children Bedroom

Family Bedroom

/ GENERIC ROOMS CAN SERVE MULTIPLE FUNCTIONS

PROJECT

Impact Hub

LOCATION

Amsterdam,
The Netherlands

PERIOD

2014

TEAM

AKKA Architects



/ Impact Hub Amsterdam is part of a global ecosystem of 60+ Impact Hubs with over 7000 members that make impact makers thrive, around the world. This co-working space is a gateway to resources, knowledge and talent to move ideas and initiatives forward, and collaboratively create a better world.

In this project AKKA was asked to design the new location for the Impact Hub Amsterdam, our purpose was to create spaces that actively foster interactions between people, to inspire, connect and empower them to realize enterprising ideas for a sustainable impact.

The Impact Hub Amsterdam is located on the first floor of a 19th century building in the beautiful Westerpark. The Impact Hub is a co-working place for Impact Makers to work, meet, collaborate, connect, innovate, start, grow and scale. Opened in 2013, this space is specifically designed to encourage human interactions, which are necessary for collaboration and innovation.

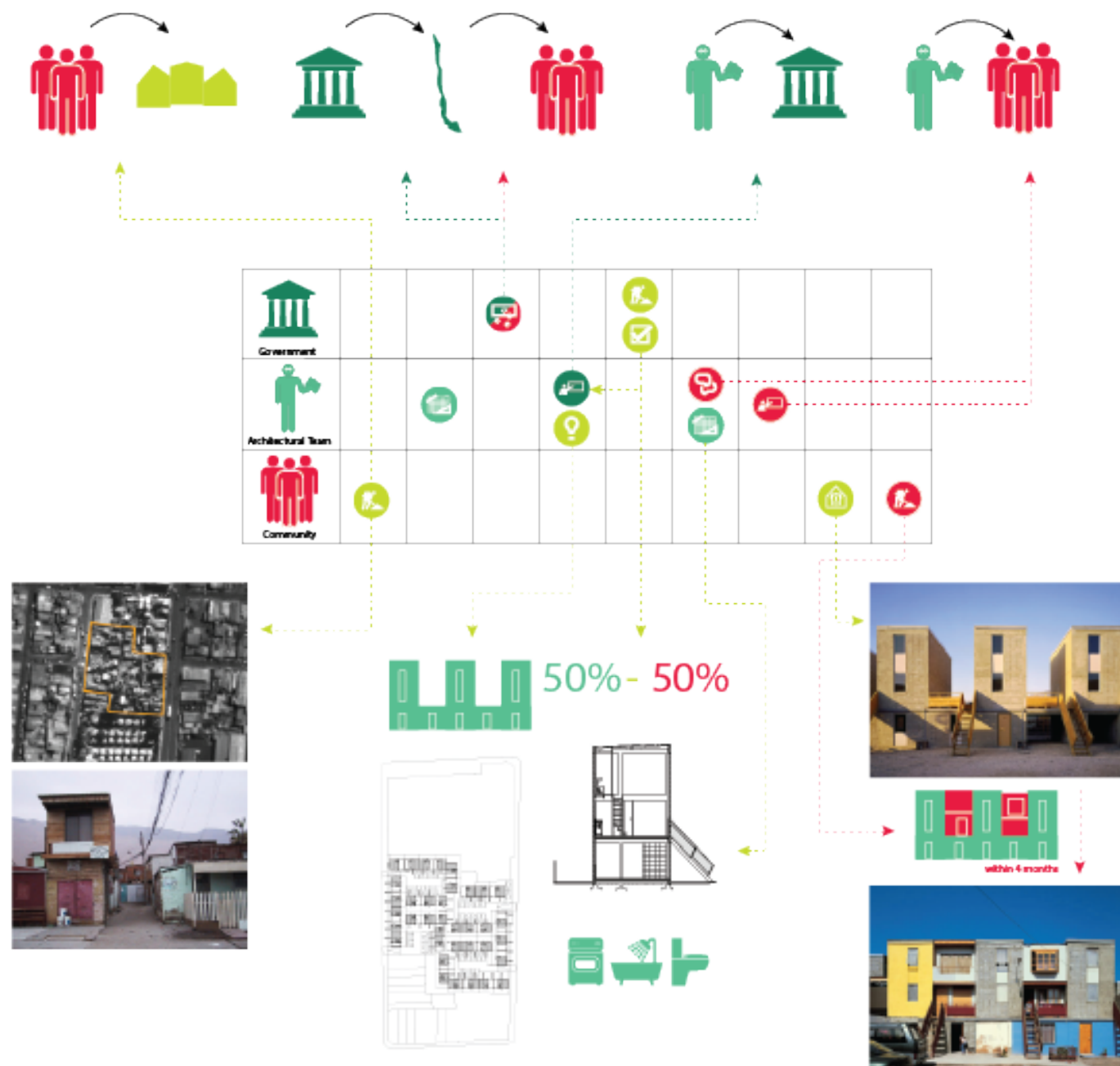
The space houses nine different yet interconnected areas which include meeting rooms, event spaces and team offices, both silent and lively co-working spaces.

PROJECT

Graduation Thesis
participation design
method

PERIOD

2012



PARTICIPATION DESIGN METHOD

In the final stage of my Architectural Studies, I took the opportunity to graduate within Explore Lab at Delft University of Technology. Here I could graduate with a project, based on my own fascination: Housing the poorest in the world. Since most of these potential clients live in developing countries, I needed to design for another culture, with different living habits and climate, than my own. To design good buildings it is necessary to understand these cultural characteristics. To overcome these problems 'participation design method' is a commonly used design method and is based on a strong participation between designer and user. To understand this method I did an intensive research on this topic Participation Design Method regarding shelter in the developing world.

The research is divided in three parts; a literature study, case studies and my own experience in Ghana where I lived with the future users of my design project for two months. The result of my design project is shown in the following pages. Based on the three separate parts of my research I was able to give a critical conclusion about participation design method and give recommendations for architects, using this method.

TRASHY HOUSING

/ LOW ENVIRONMENTAL IMPACT BY BIOGAS SYSTEM, USE OF RAINWATER AND RECLAIMED MATERIALS





PROJECT
Graduation project
Trashy Housing

LOCATION
Accra, Ghana

PERIOD
2013

\ INCREMENTAL HOUSING SCHEME ENABLES FAMILIES TO DEVELOP THEIR HOUSES DURING TIME



/ For my graduation project I designed a housing project in the capital of Ghana. Stuart Gold, the founder of the company Trashy Bags bought a plot of land in Accra with the intention to construct houses for his employees who are currently living in slums. I had the opportunity to work with the employees of Trashy Bags, the future residents of the Trashy Housing Project.

The design is based on an incremental scheme, where Stuart will be responsible for the structure and sanitation. The residents will be responsible for the facade and inner walls themselves. In this way the financial costs are divided between both parties.

The architectural scheme gives the families the freedom to grow their house during their lives. Young couples can choose to build a single apartment right now and add extra rooms if necessary.

The structure is made from pressed earth bricks and in-situ poured concrete. Sanitation is included in this structure. The system is covered with a tropical roof of re-used billboard. This will collect the rainwater to flush the toilets, which are connected to a biogas system. Simple but refined detailing make it easy to finish the house for the residents.

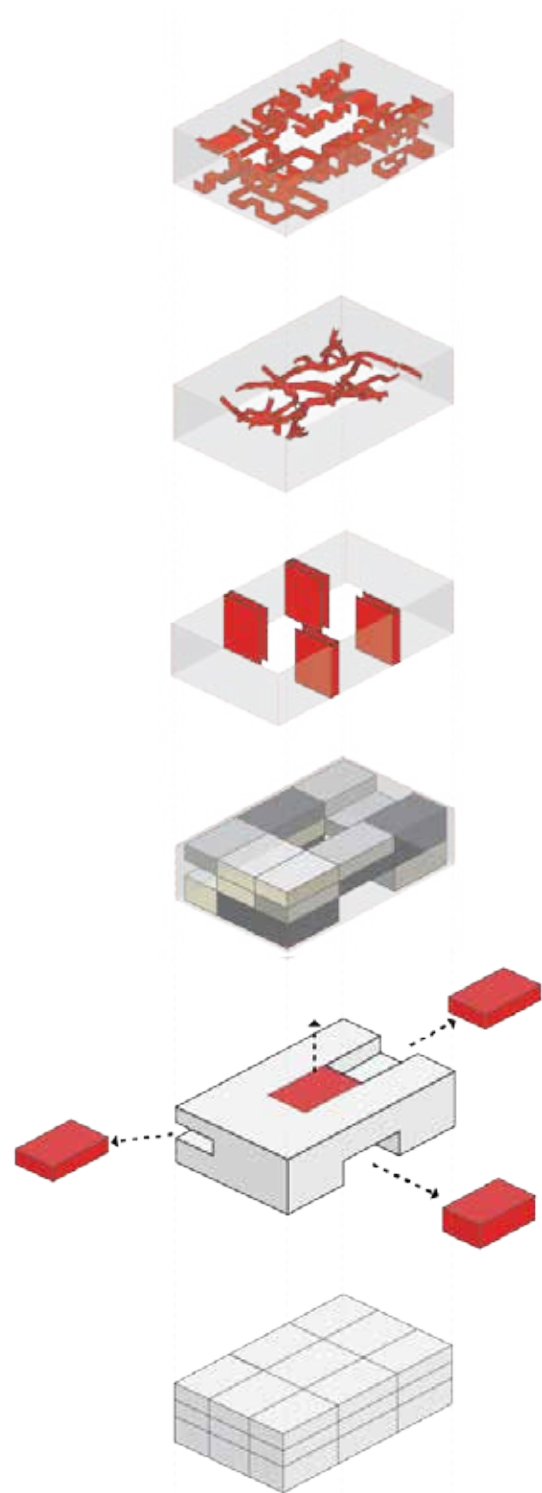


PROJECT
Mediatheque

LOCATION
Casablanca,
Morocco

PERIOD
2011

TEAMMEMBERS
Jiran Ma &
Kuno Jacobs



\ The city Casablanca is a mixture between its old Moroccan centre, the French neighborhoods and the modern skyscrapers. These three parts come together at the design location of the Mediatheque for a project during my studies at Delft University of Technology: Public Realm.

Together with Jiran Ma and Kuno Jacobs we proposed a building, which is a contradiction in itself. From outside we see a facade with its' simplicity (referring to the French context), while inside the chaos of the Medina is created with the so-called 'by-passes' and the 'alien'. The bypasses combine the different clean, white boxes within the building, which have the same function. These functions (library, exposition and theatre) are recognizable by the different wooden materials from the alien, which defines the spaces in these white boxes. The modernity of Casablanca is reflected in the materialisation of our building.

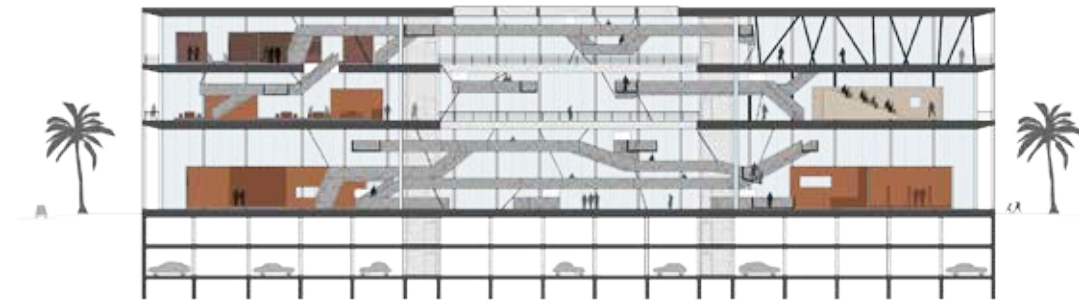
MEDIATHEQUE

/ 3 ROUTES CROSSING
9 GENERIC ROOMS

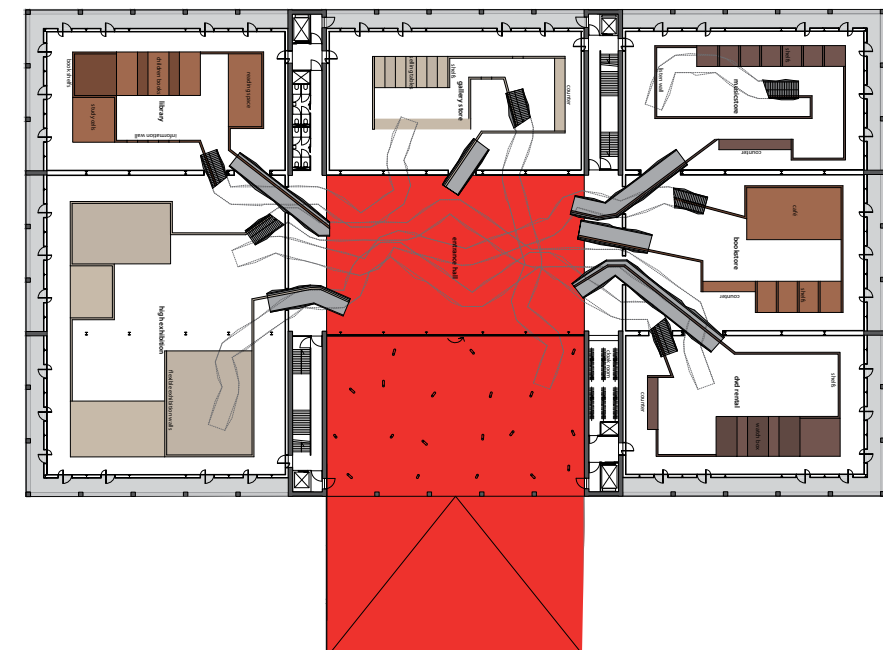
SOUTH ELEVATION



SECTION



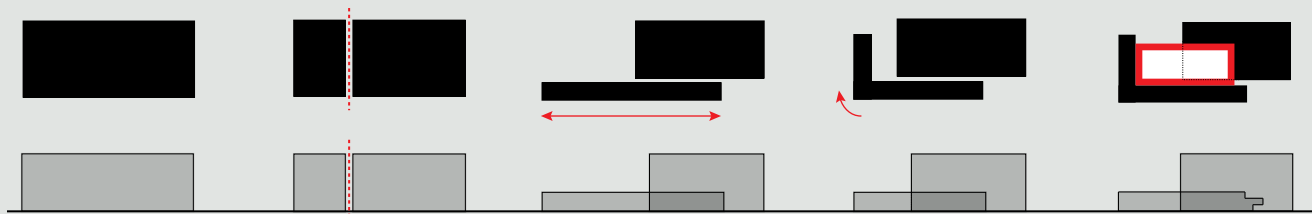
GROUND PLAN



PROJECT
Boijmans van
Beuningen depot

LOCATION
Rotterdam,
The Netherlands

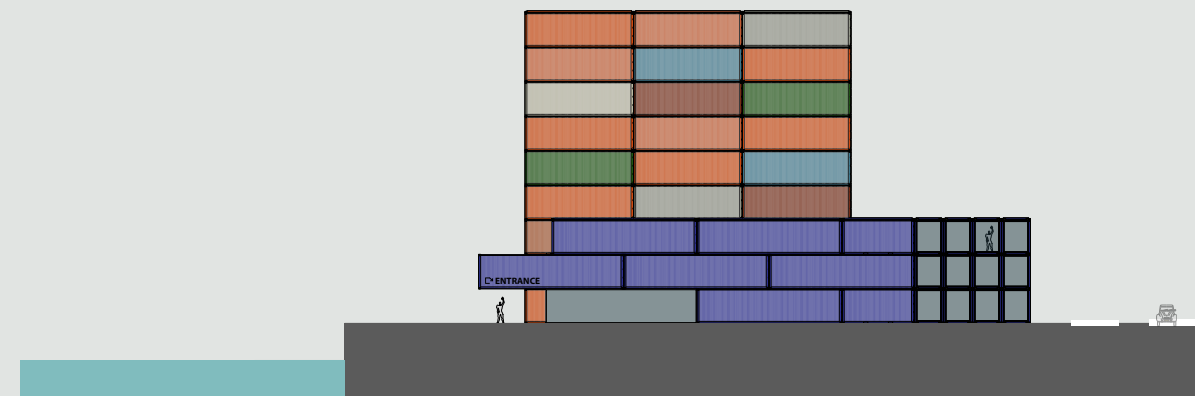
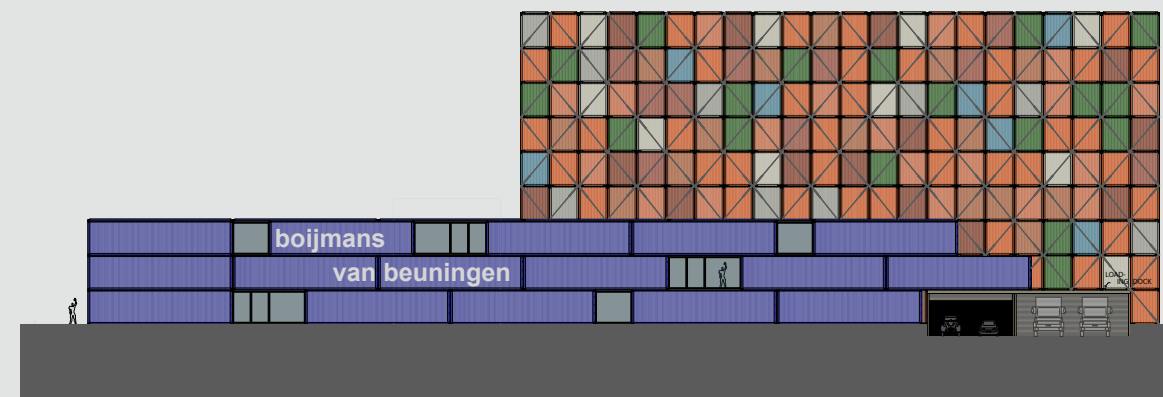
PERIOD
2010



\ For a study project at Delft University of Technology, I designed an artdepot building in the harbor of Rotterdam. Since the art, stored in the building has to be transportable, the size of the collection items are limited to the size of a shipping container. This made it possible to construct the building completely out of re-used shipping containers. In total the building exists out of 827 containers.

The exhibition space, together with the offices are designed as a pavilion, while the storage is a rectangular box. The pavilion exists out of new-painted, blue containers. The re-used containers of the storage building have their original colors. In the middle of these two forms, a garden arises, where art of the collection is shown.

/ 827 RECLAIMED
SHIPPING CONTAINERS



PROJECT
Interior stadskantoor

LOCATION
Utrecht,
The Netherlands

PERIOD
2009

TEAMMEMBERS
Kraaijvanger



CARPET DESIGN

\ 5 CARPET TILES ARE REPEATABLE IN ALL DIRECTIONS



/ A FLOOR NEVER REVEALS REPETITION NOR DIRECTION

/ During her internship at Kraaijvanger Imke designed a concept for the carpet of the new municipality building of Utrecht. The design exist of five different square carpet-tiles, which are connectable in all possible directions. Hereby the carpet is easily placeble and will never show repetition nor direction.

\ RESEARCH ON PARKING REGULATIONS



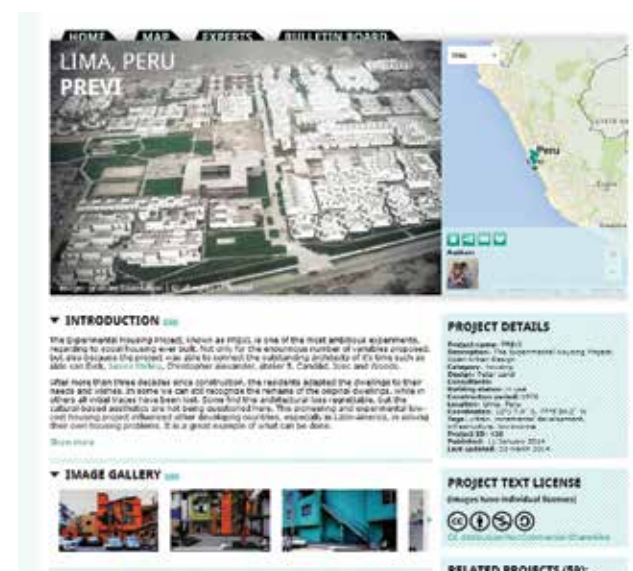
groosmans partners (2013) *parkeergarages approved NEN2443:2013*, Rotterdam, The Netherlands

\ RESEARCH ON TEMPORARY CITIES



www.nederlandwordtanders.nl

/ SEVERAL ARTICLES AS AMBASSADOR OF A.I.D.



www.architectureindevelopment.org

www.akkaarchitects.com
 letstalk@akkaarchitects.com
 Skype name: AkkaArchitects

Marnixstraat 83d
 1015 VD Amsterdam
 The Netherlands

Ms. Imke van leuken
 REGARDING
 Recommendation letter

24 February 2014

Dear Sir / Madam,

I would like to take an opportunity to offer a recommendation for Imke van leuken, who has worked in our office as a part-time intern for over four months starting October 2013.

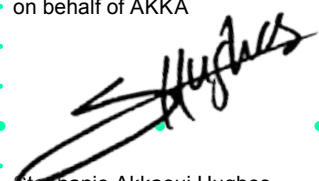
During this period, Imke was involved in several phases (concept design, design development and execution drawings) of some of our projects in Amsterdam and Dubai.

Imke's main tasks consisted of research on various cultural and design topics, design and drawing of different items on the various projects including concepts, details, furniture and millwork items. Imke has also participated in site inspection visits during the construction phase and actively contributed to team design discussions.

During her time at AKKA, Imke proved to be a valuable asset to the team. She expanded on her practical experience, was able to learn quickly through her own work and the work of others. During her work on the projects, Imke showed a constructive team spirit and an ability to coordinate her work effectively as part of a larger team. She has carried out her tasks conscientiously, responded well to feedback and showed a real growth as an architect over the period of her internship.

It is for these reasons that I offer my recommendation for Imke. We wish her all the best in her future career. Her drive and abilities will be an asset to any office she chooses to join in the future.

Yours sincerely,
 on behalf of AKKA



Stephanie Akkaoui Hughes
 Founder and lead architect

ABN Amro 48.59.89.328
 BIC ABNANL2A
 IBAN NL89ABNA0485989328

VAT 26.64.59.547.B.01
 KvK 56036043
 T +31 6 264 31 570



Ministerie van OCW, Postbus 20067, 2500 GB The Hague

Office of the Chief
 Government Architect
 Suite 404/001 7
 P.O. Box 20067
 2500 GB The Hague
 The Netherlands
 www.rijksbouwmeester.nl
 Contactpersoon
 F.L.H. Alkemade
 T +31(0)10413179

Date April 5, 2016
 Subject Recommendation letter Imke van Leuken

TO WHOM IT MAY CONCERN

From December 2014 to April 2016 Imke van Leuken worked as an architect in our office. During this period she showed a strong commitment in every field of the various projects she worked on, such as:

- development of design in early design phase of large scale (renovation) projects.
- visualizing ideas and preparing presentations (schematic illustration, architectural drawings and artist impression).
- execution of feasibility studies & testing program of requirements.
- work in field of multiple stakeholders (government, municipality and private investors) & experts (designers, technical and costs experts).
- draft quality standards for tenders.

Imke is a stayer and is not satisfied before the highest results are achieved. Her approach and design are always well thought out. She is a team player and at the same time capable to work individually. Accuracy, punctuality and decisiveness are important characteristics of Imke. Her knowledge about the works of architects worldwide as well as contemporary architecture is excellent. As a colleague she is friendly and willing to assist whenever possible.

My colleagues and I genuinely regret her departure, although we understand and respect her wish to take on a new challenge in her career by enlarging her experience outside The Netherlands. I can highly recommend her as a qualified architect and a fine colleague. I wish her every success in her job applications.

Floris Alkemade



Chief Government Architect of the Netherlands

/ PORTFOLIO BY
IMKE VAN LEUKEN

June 2016

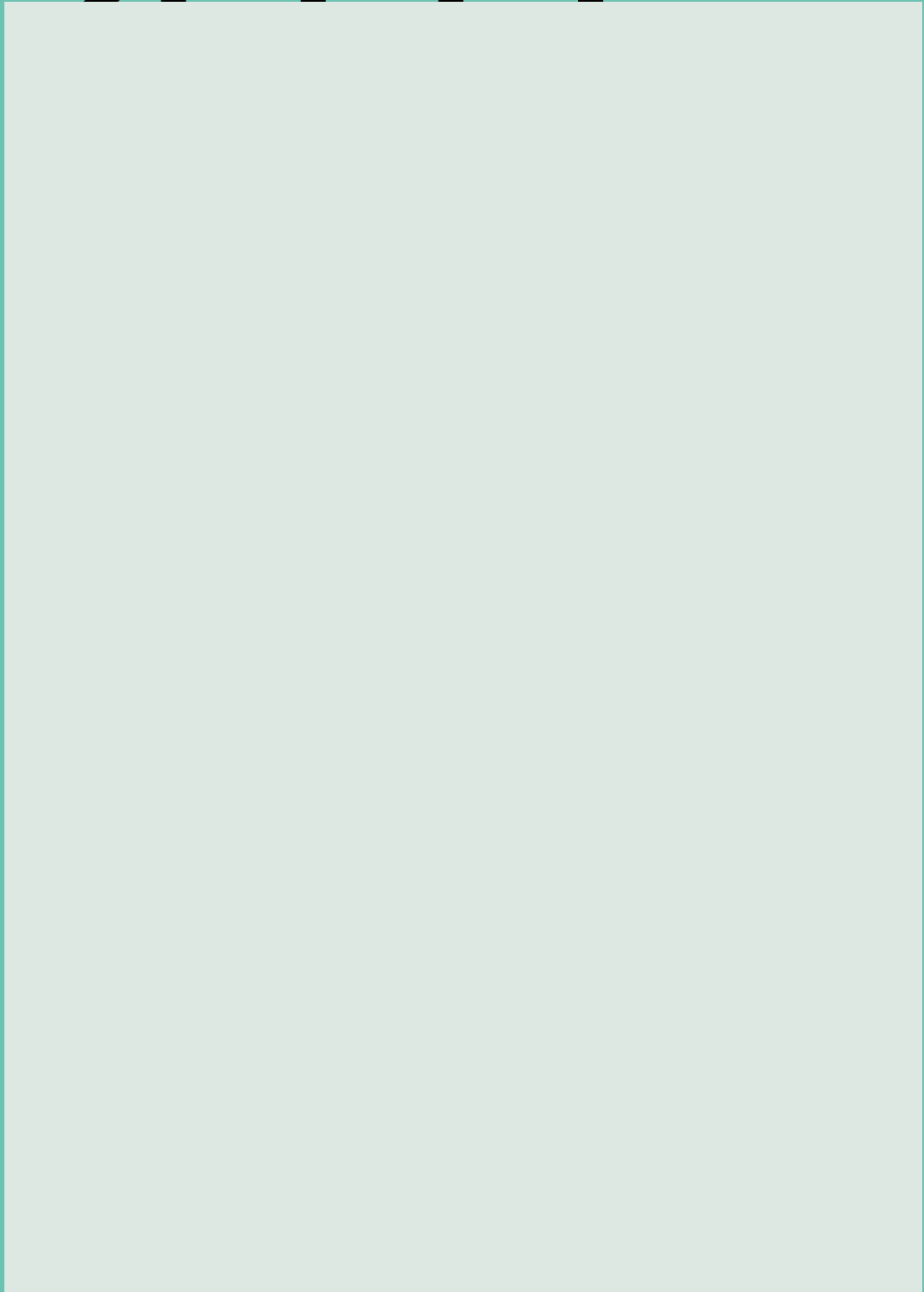
De Wittenkade 63-3
1052AD, Amsterdam
The Netherlands

+31 6 149 147 00
imkevanleuken@gmail.com
skype: imkevanleuken

www.imkevanleuken.nl

www.vlaa-architecten.nl

IMKE



PORTFOLIO